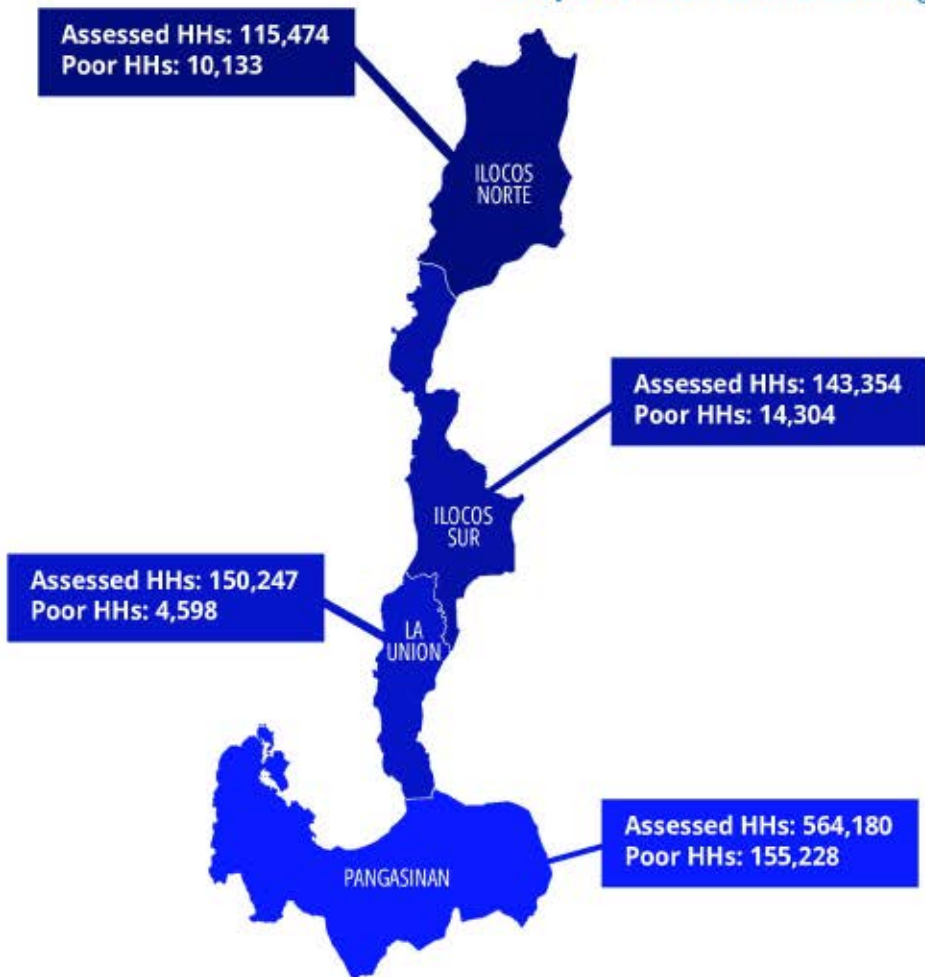


NUMBER OF HOUSEHOLDS (HHs) ASSESSED AND IDENTIFIED AS POOR

Listahan identified

184,263

poor households among the total
973,255 households assessed in Region 1.



DEPARTMENT OF SOCIAL WELFARE AND DEVELOPMENT
FIELD OFFICE 1

National Household Targeting Section
Quezon Avenue, City of San Fernando, La Union
Trunkline Number: (072) 687-8000 (loc. 11221)
Email Address: nhts.fo1@dswd.gov.ph



Listahan 3

Bawat Bahay Magkakasama sa Kaunlaran

REGION 1

QUICK FACTS AND FIGURES



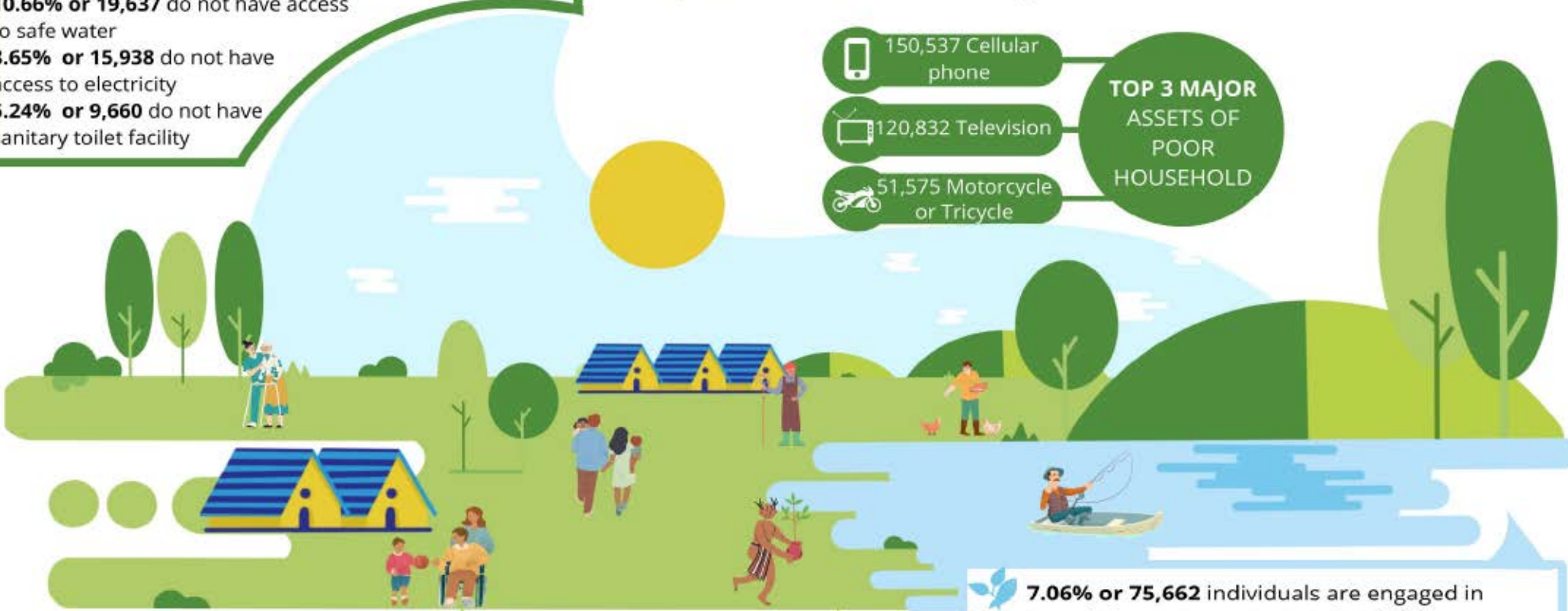
LISTAHANAN 3 RESULTS

Listahanan, also known as the National Household Targeting System for Poverty Reduction (NHTS-PR) was established by the Department of Social Welfare and Development (DSWD) to target who and where the poor are. The comprehensive database serves as a basis for selecting beneficiaries for social protection programs and services in the country. Results from the third assessment conducted in 2019 identified **184,263 poor households** among the **973,255 assessed households** in Region 1.







Of the **184,263 targeted** poor households
35.53% or 65,466 have outer walls made with strong material
60.26% or 111,028 have roofing made with strong material
10.66% or 19,637 do not have access to safe water
8.65% or 15,938 do not have access to electricity
5.24% or 9,660 do not have sanitary toilet facility

TOP 3 MAJOR ASSETS OF POOR HOUSEHOLD

- 150,537 Cellular phone
- 120,832 Television
- 51,575 Motorcycle or Tricycle



Of the **1,072,037** individuals who constitute the **184,263** poor household

					
516,562 or 48.19%	555,475 or 51.81%	534,108 or 49.82%	285,318 or 26.61%	44,259 or 4.13%	11,583 or 1.08%
FEMALE	MALE	CHILDREN	YOUTH	SENIOR CITIZEN	PWD

2.96% or 5,451 poor households belong to an Indigenous Peoples Group and most of them are located in Ilocos Sur.

7.06% or 75,662 individuals are engaged in farming, while **1.15% or 12,736** individuals are engaged in fishing.

56.95% of the 1,072,037 or 610, 551 poor individuals are part of the labor force and majority of them are found in rural areas.

50.87% of the 610, 551 labor force or 310, 577 do not have any reported occupation.

1,935 individuals of the poor working population have no formal education.